

VOLUNTARY PLANT CLOSURE AUCTION!



HYSTER 10,000LB FORKLIFT



TCM 5,000LB FORKLIFT



HYSTER H60XM 6000LB FORKLIFT



INGERSOLL-RAND 15HP COMPRESSOR



SILVER 24 TRIPLE BELT SANDER



25HP BLOWER & 6' CYCLONE



THURSDAY, OCT. 4th 10 AM
Mfrs of Cross Laminated Timber Products



KALLESOE LAMINATING LINE

PLACE:
20 Braid St.
New Westminster, B.C.

PREVIEW:
WED., OCT. 3rd 9 AM - 5 PM

TERMS OF SALE

Payment: Full payment day of sale by wire transfer, cash, Visa, Mastercard or company cheque accompanied by bank letter unconditionally guaranteeing payment on presentation. Full payment by cleared funds must be made before removal of items purchased. Buyer's Premiums: 15% on-site and 18% on-line, will be added to all invoices. All items in auction are subject to additions, deletions and prior sale. **Removal:** By 12 noon, Friday, Oct. 19th. No exceptions.

All items are sold "as is - where is", with all faults. While quantities and descriptions are believed to be accurate, the auctioneer, owner, employees or counsel make no warranties or guarantees either expressed or implied as to the authenticity, genuineness of, or defects in any lot, and will not be held responsible for any advertising discrepancies or inaccuracies. No warranties whatsoever are made as to condition, merchantability or fitness for any use of any item. Please take advantage of our preview and inspection period.



DIRECTIONS

From Hwy 1, take Brunette St. exit South .5 km to Braid St. Turn left, drive 4 blocks, then right on Braid to Auction Site on right.

BID LIVE, REAL TIME, ON-LINE!
REGISTER AT:



WEINIG HYDROMAT 22AL 5 HEAD MOULDER

BID LIVE, REAL TIME, ON-LINE!
REGISTER AT:  BidSpotter.com™
Live Interactive Auction Webcasts



AUCTION SITE: (604) 524-9026
T. 604-530-9351
E. info@tradewestsales.com
www.tradewestsales.com



AUCTION SITE: (604) 524-9026
T. 604-530-9351
E. info@tradewestsales.com
www.tradewestsales.com



2002 BUTFERRING 4 HEAD POLYSANDER



EMA RS1 20" THICKNESS PLANER



EMA DS410 16" JOINTER



KENT HORIZONTAL RESAW

MAJOR MACHINERY

Kallesoe 30' Wood Laminating Press Line: Set as a cross laminated timber press line producing products 30' long & 5' wide. Presses can run separately. Line also produces edge glued panels & gluelam posts & beams. **Press #1: Kallesoe 5' x 13' x 5 1/2"** Hydraulic Press. Top & side Pressure. 16 cylinders on top, 7 on side; (2) Saturn Series Natural gas heaters for heating oil in platens; **Press #2: Kallesoe 5' x 15' x 5 1/2"** Hyd. Press. (18) Top & (7) side cylinders; Separate PLC Controls for each Kallesoe press; **Tri-Tech Bridge Section:** Custom-Built 32" x 6' x 9" Hydraulic Press. (2) top cylinders; **HD Infeed Conveyor:** 5'x10', w/ drive; **HD Outfeed Conveyor:** 5'x12', w/ drive

Weinig Hydromat 22AL Moulder , 5 spindles, 4-3/4" x 8" (120mm x 220mm), including extra Hydrolock heads, 120ft/min; Jointed, chromed; Bottom 1st & 5th spindles): 10 & 15HP; Right & Left (2nd & 3rd): 10HP each; Top (4th): 20HP; Variable chainless throughfeed, 10HP; 440V • (17) total cutting head, assorted sizes • **Weinig Rondamat 925 Profile Knife Grinder**

Centauro R800 Vertical Band Resaw 31.5"; 16" opening; 15HP; Vert power feed rolls; (4) Spare 4" blades • **Kent 32" Horizontal Band Resaw, 12" x 12"**; 30HP/3HP feed; 12" x 12" throughfeed belt; Vickers HPU • (2011) **L-M Mobile Package Saw;** As new; Cost \$10,000 • (3) 20HP heads, incl. front planer head; 600V; 24"W x 4"H cap. • **SSC Panel Saw, Model 5860-T2;** 5' High x 1/2" Thick Capacity; Vert. & Hor. Cut; 120V; 8'H x 10'W Frame • **Doucet 18" RH Chop Saw, 10HP • Dust Collection:** 25HP blower; 6' Cyclone; Galvanized ducting • (2) Double & (1) Single dust collectors; 115V • **Basic Technologies 50 HP 600V Hydraulic Power Unit • More...**

WOODWORKING

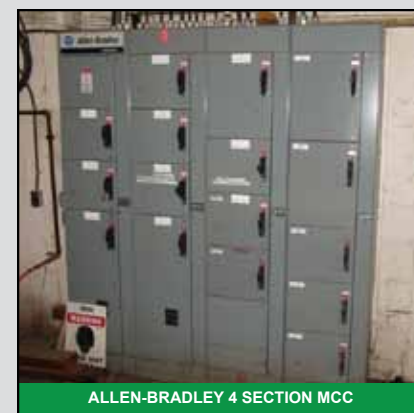
Ema R51 H3 Thickness Planer, 20" x 12"H capacity; Helicoidal knives; 250V 3 PH • **Ema DS 410 16"x 8' Surface Jointer;** 6.6HP 600V 3PH • **Vitap Vertical Multi-Spindle Drill;** 10 Spindles; Power upgrade • **Delta Unisaw 10" Table Saw;** Tilting arbor • **Dewalt 10" Mitre Saw • Delta 16 1/2" Drill Press • Bench Grinder**

(3) FORKLIFTS

Hyster 10,000LB Forklift, Model H90 XLS LPG; Side shift; 172" 3 stage mast; Pneumatic tires • **TCM 5,000LB Forklift; Model FCG25N6;** LPG; Side shift; 189" 3 stage mast; cushion tires • Spare Forks: Pair 20" x 48" long; Pair 16" x 42" long • '03 Hyster H60XM 6000LB Forklift, LPG, new pneumatic tires, Side shift, 181" triple mast



DOUCET 10HP CHOP SAW



ALLEN-BRADLEY 4 SECTION MCC

(2) WIDE BELT SANDERS

2002 Buttering 4 head Wide Belt Polysander; Model Super 413 RRR; s/n 75095; 53" wide; As new condition! New cost \$243,000; Note: This machine only, high bid subject to owner approval. • **2001 Silver 24" Wide Belt Sander,** (3) 20HP heads, incl. front planer head; 600V; 24"W x 4"H cap.

GENERAL

Ingersoll-Rand SSR Screw type 15HP Air Compressor, Model EP15U; Camair air dryer; 122 gallon air tank • **2011 Fromm A335 Clipless Strapping tool • (2) Fromm A33 Strapping tools;** (1) Full unit of 1/2 steel; strapping; Strapping steel dolly • **EZ-Dump Forklift Waste Bin • Spray Paint Booth** with fan and filter system • **Univeyor Roll Cases:** (4) 10"x5"; (2) 10"x10"; (2) 6"x10" • Rollcases, transfers & conveyors • **Quality Control: DeVilbiss QMG 402 Galvanized Vacuum Tank.** 110 Max PSI with pressure gauge; LaGrange Certified • **Test Presses: Pathex 21" x 24" Press, w/ 7.5HP HPU, 480V • Viceroy 80 Ton Press, 24" x 30"; w/ 5HP HPU, 220V & (8) Rexroth solenoids • (2) Fisher Scientific 18" x 17" x 16" Ovens, 120V • Kiln Oven, 6' x 3' x 2' Cap.; 250V • Rotap Sieve Shaker, 7 trays + 2 spares • Carts; Work Tables • **Inventory:** Aluminum Plate 61" x 120" x 1/2" • Assorted cross laminated beams & panels • Bolts, Hardware, More...**

ELECTRICS

AB 4 section MCC w/ 2 VFD's • (7) Transformers: Beaver 150KVA 600-480V; Beaver 112.5KVA 600/480V • Beaver e rated 75KVA 600-208/120V • Beaver 30KVA 600/240V • Acme 30KVA 480HV-208/120LV • Beaver 10KVA 600/360V 10 & 15KVA 600HV-120/240LV • Panels incl. (2) Square D 200 amp; (3) 100 amp; (10) 30 amp switches; 2 gutters • Electrical Panel incl. (2) FPE 100 amp switches & (2) gutters

NOTE: Listing subject to changes, additions and deletions without notice.



CENTAURO R800 RESAW



L-M MOBILE PACKAGE SAW



SSC 5860-T2 PANEL SAW

NEW 2011!