

ROLLING STOCK



'94 HYSTER 20,000 LB



'98 HYSTER 8,000 LB



'90 HYSTER 12,000 LB



'87 HYSTER 18,000 LB



'CLARK 25,000 LB



NISSAN 9,000 LB



ALLIS 3,000 LBS

FORKLIFTS: '94 Hyster H210XL 20,000LB Forklift; s/n E007D02043R; Diesel, 169" lift; 2 stage mast w/ side shift, enclosed cab • '87 Hyster H180 18,000LB Forklift; s/n C007D027694; diesel; 2 stage mast; 212.5" lift; Side shift; Enclosed cab; Dual front tires; Monotrol 3 sp. Trans. • Clark 25,000LB Forklift; Model C500Y5250D; 210" Fork height; Lowered Mast height: 159"; Side shift; Power shuttle transmission; Full cab; Diesel; 51" pallet forks • '98 Hyster H90XL2S 8,000lb Forklift, s/n G005D13794W; Diesel; 169.5" lift; 2 stage mast w/ side shift; (Unit #14) • '90 Hyster H90XL2S 12,000LB Forklift, s/n F5D-4000L; diesel; 169.5" lift; 2 stage mast; side shift; (Unit #12) • '89 Nissan 9000 LB

Forklift, propane, 146" lift, 2 stage, Solid cushion tires, S/N BGF03A40V • Allis 3,000 LB Electric Forklift • Spare forklift forks • Forklift Boom • Vehicles: 1988 BMW 735i Sedan, loaded • '79 Ford 1 Ton Van Truck, 12' Box, V8 Major work done • 1989 Ford Lariat 4 x 4 Pickup; Loaded, 260,000 KM, air cared • '90 Jeep Cherokee Pioneer 4 x 4 SUV; 4L 6 cyl; 215,000km; loaded; new batt, alt, rad, centre console; Re & re'd rear seal & rocker cover gaskets maintained by mechanic owner • '92 Chev Pickup, Propane • '88 Dodge Aries K, 193,000 Kms, 2.5L 4 Cyl., s/roof, body & mech. good • Crestliner 18.5' aluminum Boat, Merc 90HP outboard; Steering Console, Canopy; New Prop, floor & carpet; Fresh water only



'90 JEEP CHEROKEE PIONEER



CRESTLINER 18.5' ALUM. BOAT



'88 BMW 735i SEDAN



'89 FORD LARIAT

1998 CONCEPCION CRP2000 FINGER JOINT SYSTEM

1998 Concepcion CRP2000 Finger Joints; Model 2282; s/n J100B; Incl. Semi-automatic feeder; Double shaper w/ glue applicator; Assembly Self-feeder w/ Auto Corner Transfer; Assembly Machine; Press w 16" cut-off blade, 12,000LB force; Auto press Length Adjustment; Input: Max 120 pces/min; Output: Max 200 fpm; Hard & soft wood; Final pressed length up to 30' (9.15m); New 1998 price - \$425,000. (NOTE: Finger Joints is located in Abbotsford, BC, approx. 30 minutes from the Tye auction site. It can be previewed by appointment, or on preview day, and will be sold from the Tye site during the auction). This item only sold high bid subject to owner's approval.



WEINIG H-22BL 7 HEAD MOULDER



SLIP TUBE 100' X 25' BUILDING



SLIP TUBE 175' X 25' BUILDING



SWEED 505AA CHOPPER

ABSENTEE BIDS
If you are unable to attend this auction, you may register a confidential bid with Tradewest. Tradewest will exercise your bid at the auction, ensuring that you pay only the amount the item sells for, not necessarily the full amount of your bid. Absentee bids are permitted only with pre-registration and receipt by Tradewest of a 25% deposit. Call Tradewest for complete information.



EAVAM GANG RIP SAW



UNITED TOOL GRINDER



WEINIG 911 GRINDER



WEINIG 934 GRINDER

HOTELS

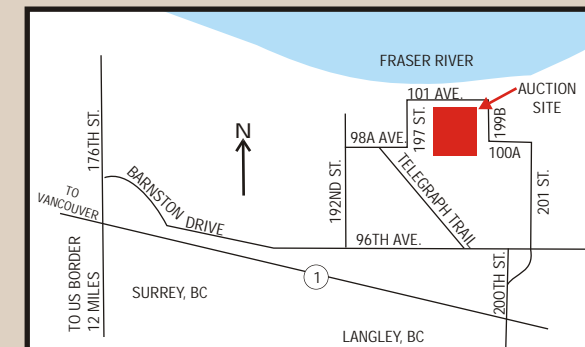
Sandman Inn, Walnut Grove (604) 888-7263
Holiday Inn Express, Walnut Grove (604) 882-2000
Travel Lodge, Walnut Grove (604) 888-4891
Tye Auction Site is 30 minutes from the US border by car and 75 minutes from Vancouver International Airport.

HOW CAN WE HELP YOU?

Over the past 29 years, Tradewest has conducted hundreds of industrial, auctions for sawmills, mines, steel fabricating machine shops, woodworking, trucking, logging, and other industries. We provide appraisal services and confidential proposals for the sale of your equipment. Contact Ken Ardiel today at (604) 530-9351.

TERMS OF SALE:

PAYMENT: Full payment - day of sale by Wire Transfer, Cash, Visa, Mastercard or Company Cheque accompanied by bank letter unconditionally guaranteeing payment on presentation. No Personal cheques. Full payment must be made before removal of purchase. 10% Buyer's Premium at this sale. 2% surcharge for credit card purchases. All items in auction subject to additions & deletions. **REMOVAL:** Small tools day of sale. Equipment not later than 4 PM, Friday, April 29, 2005. Everything is sold "as is, where is." All sales final. While quantities and descriptions are believed to be accurate, the auctioneers, owners, employees or counsel make no warranties or guarantees either expressed or implied as to the authenticity, genuineness of, or defects in any lot, and will not be held responsible for any advertising discrepancies or inaccuracies. No warranties whatsoever are made as to condition, merchantability or fitness for any use of any item. Please take advantage of our preview and inspection period.
NOTICE TO U.S. BUYERS: 1. Most equipment manufactured in the United States returns duty free. 2. Machinery manufactured in Canada is subject to duty of 5%. 3. Canadian sales tax is not applicable on goods shipped out of the country. 4. Purchases are payable in Canadian funds. At time of printing the US dollar is worth \$1.21 in Canadian.



UNRESERVED LUMBER REMAN/SAWMILL AUCTION!

TYEE TIMBER PRODUCTS LTD.

THURSDAY, APRIL 14th, 10AM
PREVIEW: Wednesday, April 13th, 9-4
Place: 19822 - 101 Ave., Langley, BC

SITE TEL: (604) 888-1443
SITE FAX: (604) 888-0026

UNRESERVED LUMBER REMAN/SAW AUCTION!

Due to closure of Manufacturing Division of
TYEE TIMBER PRODUCTS LTD.

THURSDAY, APRIL 14th, 10 A.M.
Preview: Wednesday, April 13th, 9 a.m. - 4 p.m.
Place: 19822 - 101 Ave., Langley, BC



WEINIG H22BL 7 HEAD MOULDER



'94 HYSTER 20,000 LB FORKLIFT

WELL DESIGNED & MAINTAINED REMAN PLANT



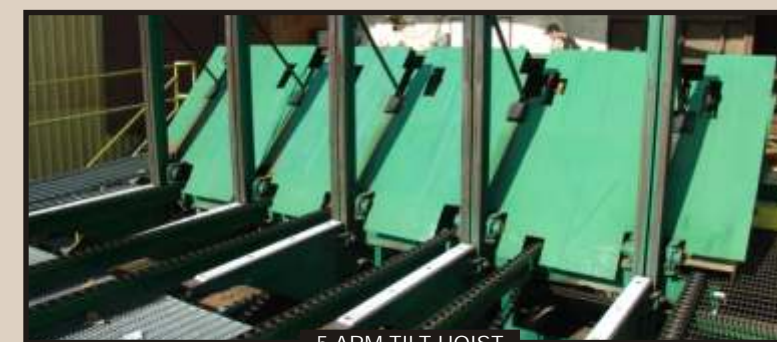
TRIM SAW TABLE



POWELL 48" RESAW



27 UNIT CHIP BIN



5 ARM TILT HOIST

- AUCTION SITE -
Tel: (604) 888-1443
Fax: (604) 888-0026
Email: kardi@tradewestsales.com

Sale Conducted By



Contact: Ken Ardiel
Tel: (604) 530-9351
Fax: (604) 530-0194
E-mail: sales@tradewestsales.com
www.tradewestsales.com
PRINTED IN CANADA

Sale Conducted By



Contact: Ken Ardiel
Tel: (604) 530-9351
Fax: (604) 530-0194
E-mail: sales@tradewestsales.com
www.tradewestsales.com



TRIM SAW LINE: 16'6" x 29'6" 5 Run Infeed Deck, 10HP drive • 4 Arm Tilt Hoist, 15'4" W, Max package height 67"; Arm Spacings: 52", 53", 75", 10HP drive • 15' x 80" 5 Run Spill Table, H78 Camelback chain: 5 HP drive & Radicon reducer • 2 Saw Trim Table, 22' x 31" 12 Run Transfer Deck, c/w 11 Roll 60" x 22" Rollcase: (2) 15HP saw motors: 10HP & 2HP • (5) Foot pedals • 29' x 16" Waste Conveyor, flighted chain, 5HP & Radicon reducer • 29' x 16" Incline Waste Conveyor, flighted chain, 7.5HP drive w/ Radicon reducer • 51' x 17" Belt Conveyor, 5HP w/ 39.4/1 Reliance gear drive • 28'6" x 18" Belt Waste Conveyor, 5HP • 2 Section MCC • GE 10KVA Transformer • Woods Elral AC Inverter, Variable Speed Drive • Operator control • 18'6" x 32" 6 Run Transfer, H78 camelback chain: 5HP drive w/ Radicon 30:1, 230/460V • (6) 32" Kicker arms w/ rollers • (4) Square D 30 amp Switches • Allen Bradley Starters • 200 amp 480V Splitter • Fregrol F-2 460V Variable Frequency Drive, Model FR-F2-H3700-V • (12) Square D 15 amp Switches • 28' x 30" Belt Conveyor, 5HP drive • (6) Kicker Arms w/ Tipple Rolls • GREEN CHAINS: 72' x 17' 5 Run Green Chain, w/ 3 runs rollout chain: 5HP drive w/ 60:1 reducer, 460V • 76' x 17' 5 Run Green Chain, w/ 3 runs rollout chain, 5HP drive & reducer • Green Chain Building: 160' x 12' w/ lights, etc. • (25) 13' x 17' x 54" 6 Roll Lumber Rolloffs • Custom 13'W x 50' 4 strand portable green chain, on tandem axle highboy frame w/ 5'3" tilt up section, c/w (2) 3HP side rolls, etc.

HULA SAW SYSTEM: MF 2 Saw Hula System, 18" saws: (2) 7.5HP drives, 3500 RPM 230/460V • (5) Foot pedals • 29' x 12" 16 Roll Rollcase • 30' x 16" Belt Conveyor, Leeson 3HP drive & reducer • 21' x 45" 6 Run Chain Infeed Deck • 20' x 24' 7 Run Transfer Deck, H138 camelback chain, Leeson 3HP 1180 RPM, 230/460V & Radicon 50:1 reducer • 18'6" x 25' 6 Run Bar Type Unscrambler, 3HP drive & reducer • 24'6" x 16" Belt Conveyor, 3HP reducer, 208/230/460V • Trim end drop chute, poly lined • 34' x 30" Belt Conveyor, 5HP reducer, 230/460V • 12'6" x 16" Belt Conveyor, 5HP drive 230/460V 1750 RPM

RESAW LINE: 30' x 17'6" 6 Run Transfer Deck, 5HP gear motor, 230/460V • 17'4" 5 Arm Tilt Hoist; Max. package size 64" x 76"; Arm spacings: 52.5", 48", 49", 51"; 20HP drive w/ Radicon reducer, 230/460V • 23' x 18" Slick Belt Conveyor, 5HP 230/460V gear drive • 12' x 19'6" 5 Run Spill Deck, Plastic camelback chain inserts: c/w drive • Powell 48" Band Resaw, WEG 75HP, 208/230/460V 1180 RPM; • 20' Adjustable line bar infeed, (8) roll, w/ 3HP drive; (2) Spare rebuilt hydraulic motors • 5 HP Hydraulic Support Units • (2) Sets of (5) Foot Pedals • Controls & Square D Switch • Nordic 100HP Soft Start, 460V,

WEINIG MOULDER LINE: Weing 7 Head 10" Jointed Moulder, Model H22BL: s/n 1835-450; 0 • 200 FPM; Chrome shoes, bit plates, etc.; Motors: • 15 & 20HP Bottom, (2) 10HP Right, 15HP Left, 30 & 20HP Top; • Heads: (2) 6 knife 6" x 6" diam.; (5) 6 knife 4" x 6" diam.; Spares: • New gear box: New spindle for side head: (1) New & (1) Rebuilt spindles for top or bottom head: (2) New Hydro-sleeves: New 20HP drive, 3600 RPM, pulleyed to run @ 6000 RPM • Over 50 Spare Moulder Heads • Siemens 20HP Hydraulic Support Unit, 230/460V • 1HP Custom Trim Saw • Moulder Brake Cabinet, Arrow Controls, 460V • Granite 15" x 27" x 4" Surface Table • Electrical: • (2) 200 Amp Switches: 150 Amp; 100 amp switch; (3) 60 Amp; (2) 30 Amp • (16) Cutler-Hammer Resets • 30 Kvar capacitors; Solenoid valves • (2) 200 Amp splitter boxes • Fregrol F-2 VFD • 14" x 22" Belt Conveyor Moulder Outfeed; 3HP 208/230/460V • Oregon 14" Chop Saw • Octopus • 1989 Weing Profimat 22N, 226-337, 5" x 9" 4 head, 480 volts - 3 PH; Heads: Bottom 10HP; Right 7HP; Left 7HP; Top 15HP; Feed 3HP; c/w spare s/n & octopus • Weing Profimat 4 Head Planer; Model RX70D31D1T00LA: 90 x 180 mm; 6" Cap.; s/n 15664692 • Diehl DSC-56 5 Head Moulder; s/n 69M-2475-1731: 4"x6" cap.; Feed: 7.5HP; Head config: Bottom - 5HP Top - 10HP • Out - 5HP • In - 5HP • B - 10HP • New HD Moulder Auto feeder (Cost \$10,000)

CHOP LINE #1: 13'6" X 16' 7 Run Belt Transfer Deck, w/ drive • '98 Precision 18-A Jump Chop Saw, s/n 623; 7.5HP motor, 480V; 6" x 19" infeed rollcase, w/ stops; 20' x 12" outfeed w/ stops & 7" belt conveyor • '96 Precision 18-A Jump Chop Saw, 7.5HP motor, 480V; 12" x 18" infeed rollcase, w/ stops; 20' x 12" outfeed w/ stops & 7" belt conveyor • 19" Sorting Transfer Table, w/ (2) 33" outside belts & (4) 4" inside belts; 7.5HP motor & reducer • Suspended 5 Rack Sorter System, 16'6" • 10' x 8" Belt Conveyor • 13' x 13" Incline Waste Belt Conveyor, 3HP 208/230/460V • Square D 100HP Starter, Nema Size 4: 600V • (2) Univeyor 16" x 8/10" Rollcases

CHOP LINE #2: 14'4" X 16' 8 Belt Transfer Table, w/ drive & foot pedals • 1997 Precision 18-A Jump Chop Saw, 7.5HP; 20' x 5" infeed w/ stops; 20' x 12" outfeed w/ stops • 14'6" x 26'6" Transfer Table, (1) 34" belt, (6) 4" fabric belts: w/ stops; 5HP gear drive • 21'8" x 14" Belt Conveyor, 5HP gear drive • Electrics: Hammond 15 KVA Transformer, 480/100V; Switches: (3) 60 amp; (7) 30 amp; (7) Stop/start; (3) Univeyor 23"8" x 12" Rollcases • (3) Univeyor 18" x 12" Rollcases • 25' x 12" Incline Belt Conveyor, 7.5HP 230/460V & reducer • 20' x 53" Metal Sort & Bundle Table • (3) Univeyor 34" x 12" Rollcases • 21'8" x 14" Belt Conveyor, 2HP w/reducer • 35' x 28" Incline Belt Conveyor, 5HP

CHOP LINE #3: 12' x 24' Belt Conveyor w 3HP drive • (2) '97 Precision 18-A Jump Chop Saws, each w/ 7.5HP 460V; 20' x 12" rollcase infeed w/ stops; 20' x 12" rollcase outfeed w/ stops • 14' x 12' 4 Run Transfer table: w/ (1) 30" & (3) 6" fabric belts: 5.5HP • 10' x 12" Belt Conveyor, 3HP • 8' x 12" Belt Conveyor, 3HP • 10'W x 30' 4 Run Outfeed Transfer Table w/ (1) 30" rubber belt & (3) 4" fabric belts • Mitsubishi S500 AC VFD Controller • 22'x15' 4 strand infeed • 21'x15' 6 strand transfer w/ skid of chain • Scissor Lift, 12' x 5'; 4000lb w/ controls • 5' x 20' Belt Conveyor • 4' x 10' 3 Strand Transfer w/ 1.5hp drive

COMPRESSORS: Chamco 25HP; 230/460V • Swan 15HP MN-415 • Sullair SRD 105 Air Dryer • DeVilbiss 6.5HP Compressor • Active Air 5HP • Puma 2HP Portable • Manchester Receiving Tank

BUILDINGS: (2) Slip Tube Fabric Buildings, 25' x 175' & 25' x 100'

GENERAL EQUIPMENT: Carothers 27 Unit Chip Bin & 12.5 unit Cyclone • Peerless 16 Unit Chip Bin w/ Frame and Cylinders • Schutte 1320 Drop Feed Wood Waste Grinder, 12 3/4" x 18" feed opening, New Baldor 40HP 3600 RPM 600V drive motor; Near new cond. • Veceoton Wood Waste Grinder S/N TA 70/85D, 20HP Low Noise • Hydraulic Unit w/ (4) 15 H.P. • Wadkin Bursgreen 3" x 12" Multi-Rip Saw; s/n BSM 72298; Open sided: 40HP • Eavam 18" Gang Rip Saw, 50HP 2HP feed • Spare 36" resaw blades • 5HP 18" Blower, Side infeed/top discharge • Acme E41 Package Strapper, Lumber Press & Spray Line: c/w hyd. power unit • 2-Saw Hula Saw Table w/ 35'x12" conveyor w/ 5 HP motor, disconnects and (2) footpedals • Sweed 505AA Scrap Chopper, s/n 12-89-0137 • (7) 4' x 6" Motorola 2 way radios • Packaging Cage c/w air motors • (2) Safronics VFD, 100 & 150HP • 600 Amp 600V Transformer • (7) Easy Empty steel scrap forklift bins • Banding Carts & tools • Steel & plastic strappers w/ tools • (4) 4 Wheel Lumber Carts • Lumber Wrap Carts • -Approx. (8) dollies • & carts • (3) Mobile Trucks pallet jacks • (15) Staple guns • Spare sprockets & sheaves • (2) Banks 8 wall hung lockers • First Aid Room: Bed, exam chair, O2 kit, stretcher, spinal board, supplies • (2) Lunch Rooms: Convection Microwave, Admiral fridge, Danby microwave, (2) 11' Fir picnic tables • Office Equipment • Much more...

WOODWORKING EQUIPMENT: SCM D-80K Double End Tenoner • Huellshorst 14411B Double End Tenoner, s/n 10798/2 • Altendorf F-90 Sliding Panel Saw, s/n 68-7-63 • Akhurst Turbosand 4 step double panel raise sander, incl. (4) 3HP turbo sanding heads (Cost \$ 40,000) • Guillot & Fils 16" Jointer • Kosweg Thickness Planer • Maweg Double Sided Sander, S/N SE273090041205 • Jet planer/jointer • Canwood/Makita RFL01 Mortiser/Router • ME Marson 3HP Dust System • Beaver 16" band saw • Powered dust brush for flush doors • Platform Scale • Craftex 3/4" Wood Shaper (Biscuit Cutter), • Ultra-violet Drying Units

GRINDING ROOM: Weing 934 Grinder, s/n 934-942 • Weing 911 Knife Grinder, S/N 214/250 • United Tool Grinder • Spare Moulder Heads: • Dry (22 degree cutting angle 50mm straight bore): • (6) 6 knife 9" x 6" diam.; (3) 8 knife 9" x 6.5" diam.; (1) 6 knife 2" x 5.5" diam.; (2) 6 knife 6" x 6" diam.; (2) 8 knife 6" x 6" diam.; (2) 6 knife 2" x 6" diam.; (2) 8 knife 2" x 6" diam.; (1) 6 knife 2" x 5.5" diam. • Green (30 degree cutting angle 50mm straight bore): • (4) 4 knife 6" x 6" diam.; (1) 6 knife 6" x 6" diam.; (2) 4 knife 3" x 6" diam.; (1) 6 knife 2" x 6" diam. • Splitter set for 2" eased edge • 50mm Multirip hydro-sleeve w/ 6 saw blades • Saw blades • Grinding wheels • Moulder head cart • (3) Wanner Grease Guns • (80) Boxes 1 3/4" & 3" L Knives

SHOP TOOLS: Lincoln I500 amp welder • Miller 250 amp Welder • Crown HD 2HP 12" double grinder, 1725 RPM 220/440V • (2) 5" vises • Die grinder • Makita 255mm mitre saw • (3) Delta Bench Drill Presses • Arbor press • Metal work benches • Demag 5 Ton Overhead Crane, 24" Double Girder w/ 6 way controls • Budgit 1 ton electric chain hoist on 8' jib • Tecmaster table saw • Stihl D25 17" chainsaw • Hitachi Spool Nail Gun • Weed Eater • Chains • Wrenches, socket and open • Shovels • Hammers • Fluids, cleaners, lubricants • More...

MEASURING: • Kanon .001" In/out Calipers • 0-150mm/6" Digital Calipers • Mitutoyo CD-6"CS Digital Calipers • Starrett S167C Radius Gage Set • Hanetsu Mag. Base w/ Newcon Dial • Starrett No.98 6" Machinist Level • Bearing stethoscope • Needle files

SPARE MOTORS: • 20HP 230/460V • WEG 10HP drive: 208/230/460V 1765 RPM w/ Highfield 40:1 reducer • GE 50HP 440V 1800 RPM • 5HP 208/340/460V • 3HP 230/460V • 5HP 230/460V 1200 RPM • Westinghouse 7.5HP TFFF, 230/460V 1740 RPM • WEG 3HP 208/230/460V • 10HP 575V 1720 RPM • 5HP 200/220/440V 1760 RPM • 15HP 230/460V • 5HP 208/230/460V 1725 RPM • 10HP 220/440V 1160 RPM • 15HP 440V 1760 RPM • Eurodrive 1HP 50:1 Gear Motor • 30HP saw arbor motor • Reducers: • (3) Highfield #6 31:3; #8, #4 • Radicon #5 & #6 50:1 • Higear #7 50:1 • Opperman PF-5 20:1 •

Woodworking Equipment: SCM D-80K Double End Tenoner • Huellshorst 14411B Double End Tenoner, s/n 10798/2 • Altendorf F-90 Sliding Panel Saw, s/n 68-7-63 • Akhurst Turbosand 4 step double panel raise sander, incl. (4) 3HP turbo sanding heads (Cost \$ 40,000) • Guillot & Fils 16" Jointer • Kosweg Thickness Planer • Maweg Double Sided Sander, S/N SE273090041205 • Jet planer/jointer • Canwood/Makita RFL01 Mortiser/Router • ME Marson 3HP Dust System • Beaver 16" band saw • Powered dust brush for flush doors • Platform Scale • Craftex 3/4" Wood Shaper (Biscuit Cutter), • Ultra-violet Drying Units

Grinding Room: Weing 934 Grinder, s/n 934-942 • Weing 911 Knife Grinder, S/N 214/250 • United Tool Grinder • Spare Moulder Heads: • Dry (22 degree cutting angle 50mm straight bore): • (6) 6 knife 9" x 6" diam.; (3) 8 knife 9" x 6.5" diam.; (1) 6 knife 2" x 5.5" diam.; (2) 6 knife 6" x 6" diam.; (2) 8 knife 6" x 6" diam.; (2) 6 knife 2" x 6" diam.; (2) 8 knife 2" x 6" diam.; (1) 6 knife 2" x 5.5" diam. • Green (30 degree cutting angle 50mm straight bore): • (4) 4 knife 6" x 6" diam.; (1) 6 knife 6" x 6" diam.; (2) 4 knife 3" x 6" diam.; (1) 6 knife 2" x 6" diam. • Splitter set for 2" eased edge • 50mm Multirip hydro-sleeve w/ 6 saw blades • Saw blades • Grinding wheels • Moulder head cart • (3) Wanner Grease Guns • (80) Boxes 1 3/4" & 3" L Knives

Shop Tools: Lincoln I500 amp welder • Miller 250 amp Welder • Crown HD 2HP 12" double grinder, 1725 RPM 220/440V • (2) 5" vises • Die grinder • Makita 255mm mitre saw • (3) Delta Bench Drill Presses • Arbor press • Metal work benches • Demag 5 Ton Overhead Crane, 24" Double Girder w/ 6 way controls • Budgit 1 ton electric chain hoist on 8' jib • Tecmaster table saw • Stihl D25 17" chainsaw • Hitachi Spool Nail Gun • Weed Eater • Chains • Wrenches, socket and open • Shovels • Hammers • Fluids, cleaners, lubricants • More...

Measuring: • Kanon .001" In/out Calipers • 0-150mm/6" Digital Calipers • Mitutoyo CD-6"CS Digital Calipers • Starrett S167C Radius Gage Set • Hanetsu Mag. Base w/ Newcon Dial • Starrett No.98 6" Machinist Level • Bearing stethoscope • Needle files

Spare Motors: • 20HP 230/460V • WEG 10HP drive: 208/230/460V 1765 RPM w/ Highfield 40:1 reducer • GE 50HP 440V 1800 RPM • 5HP 208/340/460V • 3HP 230/460V • 5HP 230/460V 1200 RPM • Westinghouse 7.5HP TFFF, 230/460V 1740 RPM • WEG 3HP 208/230/460V • 10HP 575V 1720 RPM • 5HP 200/220/440V 1760 RPM • 15HP 230/460V • 5HP 208/230/460V 1725 RPM • 10HP 220/440V 1160 RPM • 15HP 440V 1760 RPM • Eurodrive 1HP 50:1 Gear Motor • 30HP saw arbor motor • Reducers: • (3) Highfield #6 31:3; #8, #4 • Radicon #5 & #6 50:1 • Higear #7 50:1 • Opperman PF-5 20:1 •

Listing subject to additions, deletions, changes and prior sale without notice.
10% BUYERS PREMIUM

